

**The Golden Way** is a circular route linked to all radial routes that approach the city from all directions. The route is 11 kilometres (7 miles) long and is well marked in both directions by the Golden Way logo and direction arrows. The Golden Way provides good cycling options from the suburbs of Salisbury to the city centre for commuters and to the National Cycle Network, National Byway and Wiltshire Cycleway Routes, for those wishing to head into the countryside. In addition, the route is especially suited to families who want to spend leisure time without going far from home. Families can stop off at playgrounds, somewhere to eat and drink, whilst enjoying and appreciating the local scenery.

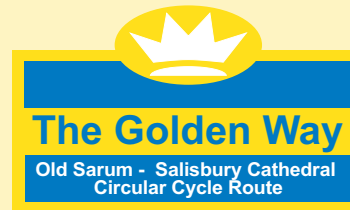
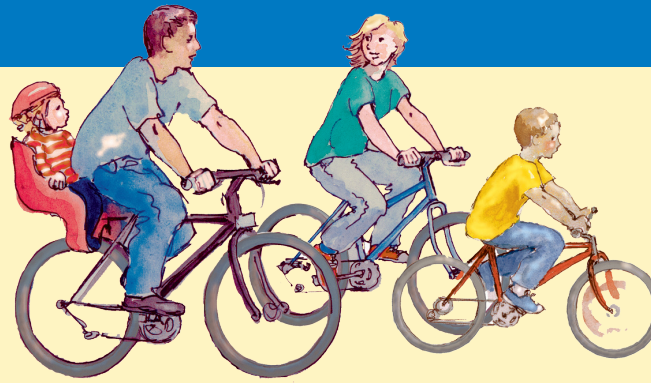
**Places Served by the Golden Way**

These are the places that can be reached by bike using this route from Castle Hill, Paul's Dene, Bishop-down, Laverstock, Milford Hill and the City Centre.

- Schools • Colleges •
- Theatres • Places of Interest •
- Major Stores • Shops •

- ★ Salisbury College ★ St Mark's School ★
- Wyvern College ★ St Joseph's RC School
- ★ Bishop Wordsworth's School ★
- ★ St Edmund's Girls School ★
- South Wilts Grammar School ★ Exeter House School
- ★ Leaden Hall School ★ Leehurst Swan School ★
- ★ Salisbury Library ★ City Centre ★
- Old Sarum ★ Cathedral Close ★ Salisbury Cathedral
- Salisbury Playhouse ★ City Hall ★ Studio Theatre
- ★ Avon Valley Nature Reserve ★
- ★ High Street ★
- ★ Southampton Road Businesses & Stores ★
- ★ City Centre Shopping Centres ★
- ★ Five Rivers Leisure Centre ★
- Strikers Bowling Centre ★ Hudsons Field
- ★ Churchill Gardens ★ Elizabeth Gardens ★

**Follow the Golden Way**  
A guide for all the family



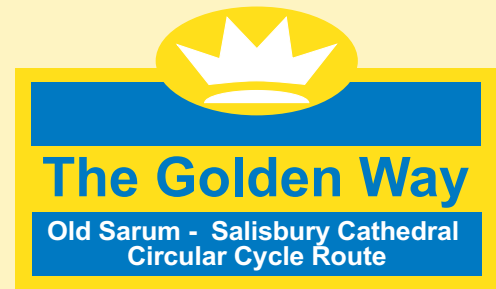
**The Golden Way** is easy to follow using this map or the Salisbury and Wilton Cycle Map which is available from local Tourist Information Centres. The route is well signposted in both directions using arrows and the Golden Way logo.



COGS cannot accept liability for individual riders' safety. It is each rider's responsibility to follow advice from the Highway Code at all times. Produced by COGS in partnership with Salisbury City Council

**The Salisbury Golden Way**

**Cycle Map**



*Improve your health*  
*Save money & beat congestion*  
*Great fun for all the family*

