

How to make direct links to the Connecting Wiltshire Journey Planner

The following information demonstrates how you can make a link for your website that populates the Connecting Wiltshire Journey Planner with your own origin and destination.

If you are a business and would like to provide a link to the Journey Planner on your website that starts from your premises the link will allow you to do just that.

Here's an example:

<http://www.connectingwiltshire.co.uk/journeyplanner/?o=BA148JN>



This places the postcode (County Hall) in the 'From' (Origin) box

The Postcode can be replaced by a town, street name or X/Y coordinates

Alternatively you can set your business as the destination:

<http://www.connectingwiltshire.co.uk/journeyplanner/?d=BA148JN>

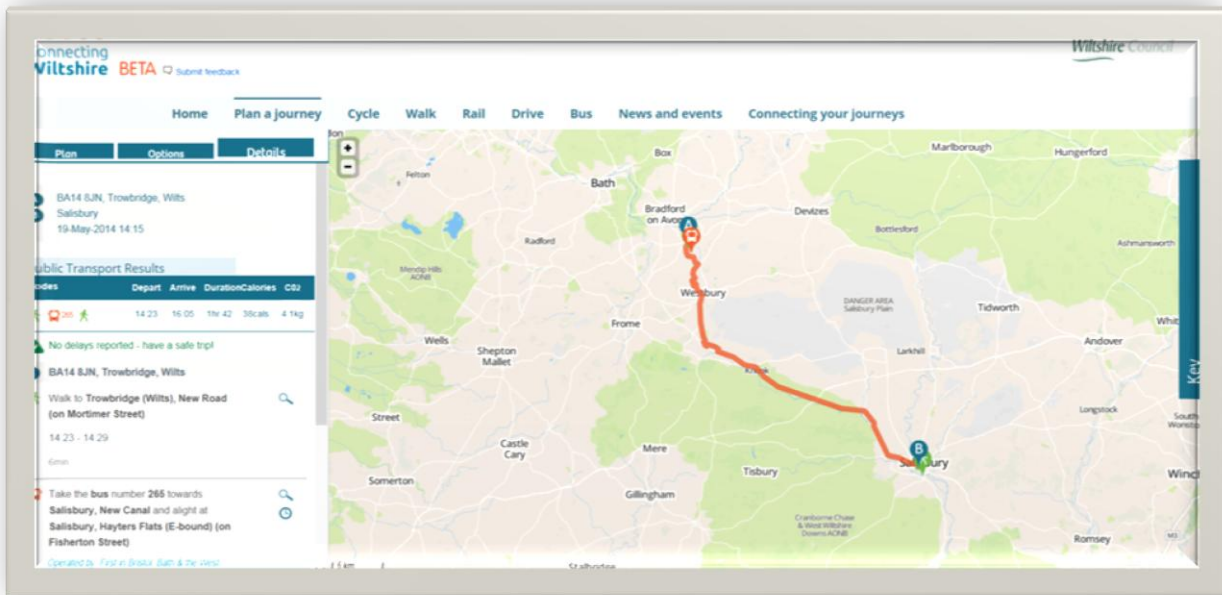
You can also populate both the 'From' & 'To' boxes:

<http://www.connectingwiltshire.co.uk/journeyplanner/?o=BA148JN&d=Salisbury>

Then just press the Get Directions button.....

Get directions

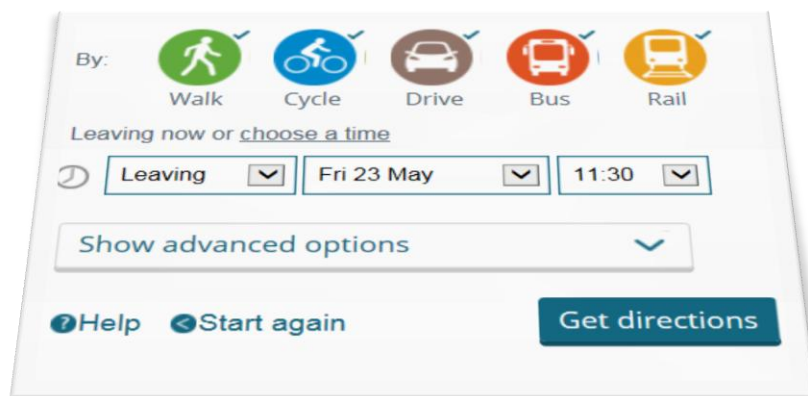




and...

Finally to make it even more accurate you could even add times and dates...

<http://www.connectingwiltshire.co.uk/journeyplanner/?o=BA147HB&d=Salisbury&dt=2014-05-23&tm=11:30>



You can use the freely available URL shortening services on the internet to reduce the size of the final link.

Google url shortener

